

Application note n° 75 ^{vl}

2D and 3D depth imaging of a hard multilayer on steel

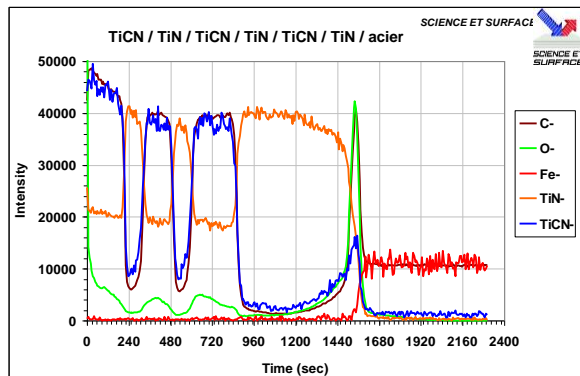
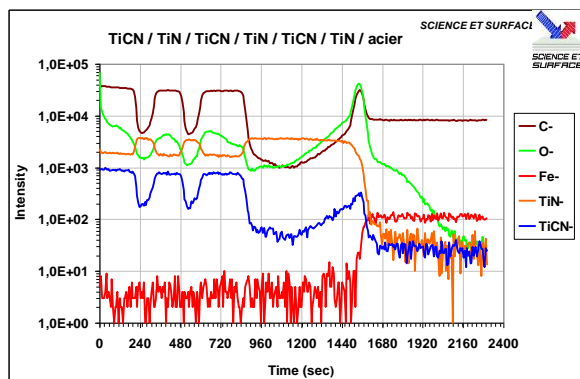
Subject: Number, nature and layers thicknesses

Technique: **SIMS**

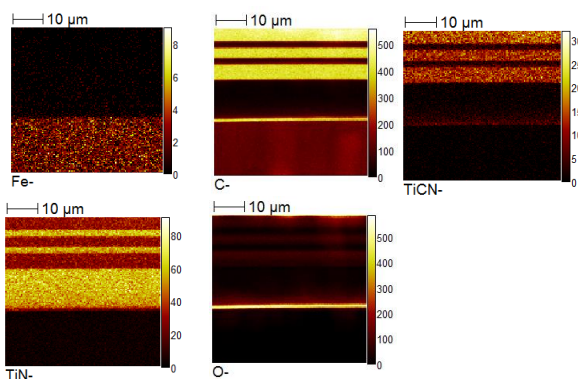
- ✓ 3D depth profilings with a high depth resolution
- ✓ Very high sensitivity

Results:

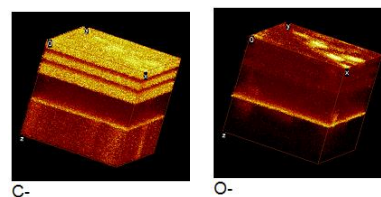
2D profile:



2D depth imaging:



3D depth imaging:



Conclusions:

- Determination of the nature and thicknesses of the layers
- 2D and 3D depth imaging reconstruction

Hard multilayer
~ 5 μm

Substrate